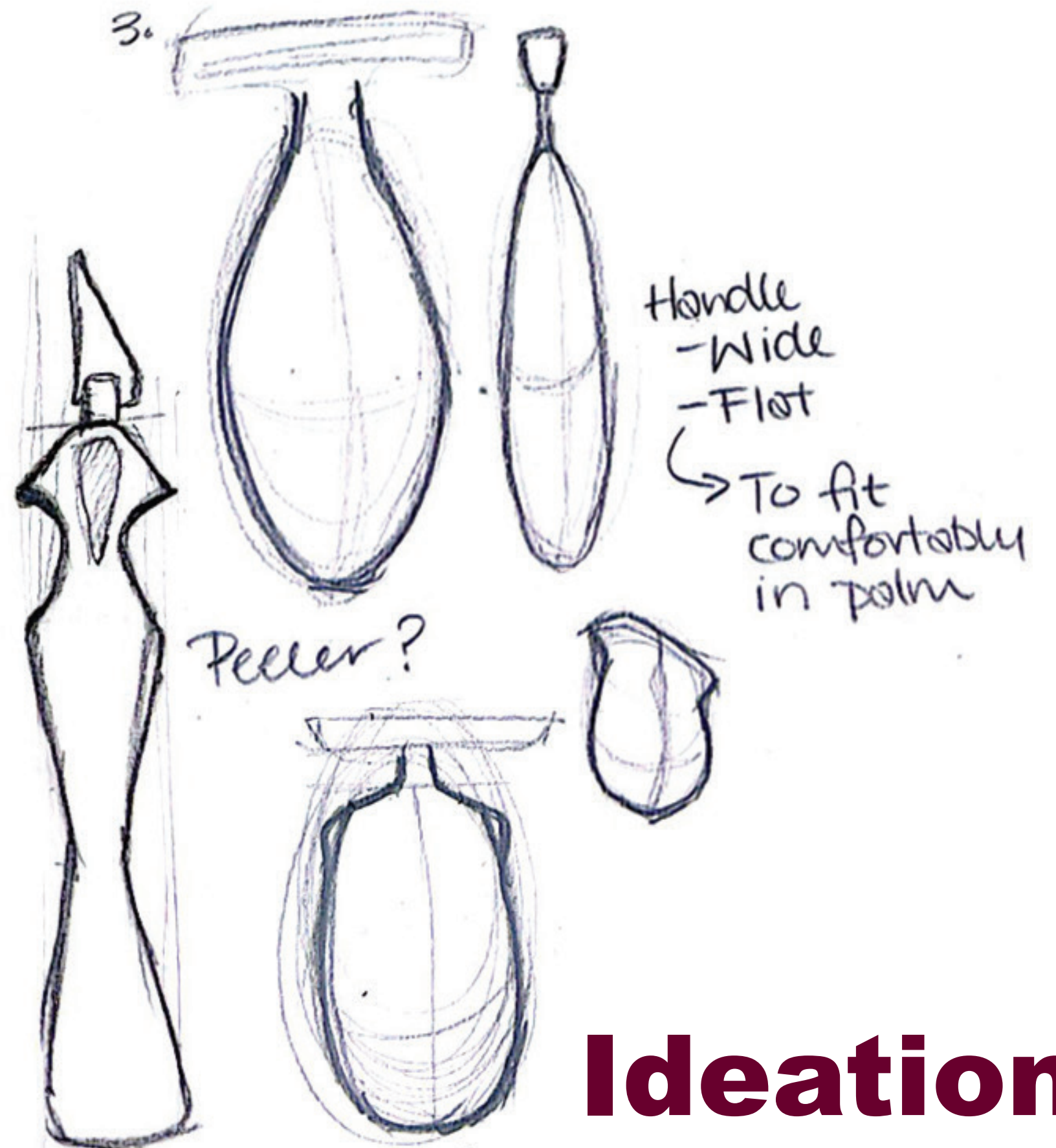
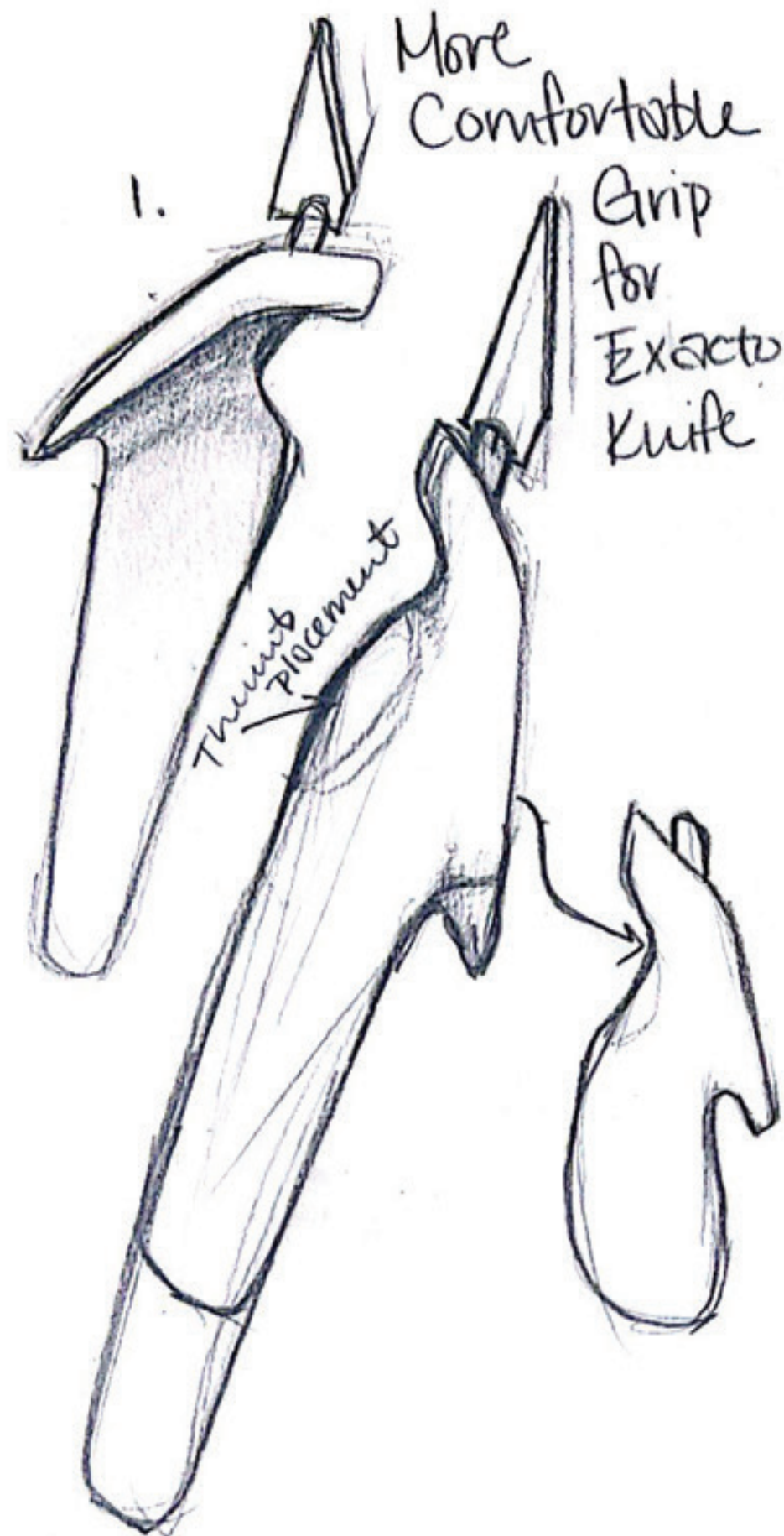


# Comfort Cut



**Market  
Research**





**Ideation**





**Prototypes**  
Looking at Ergonomics



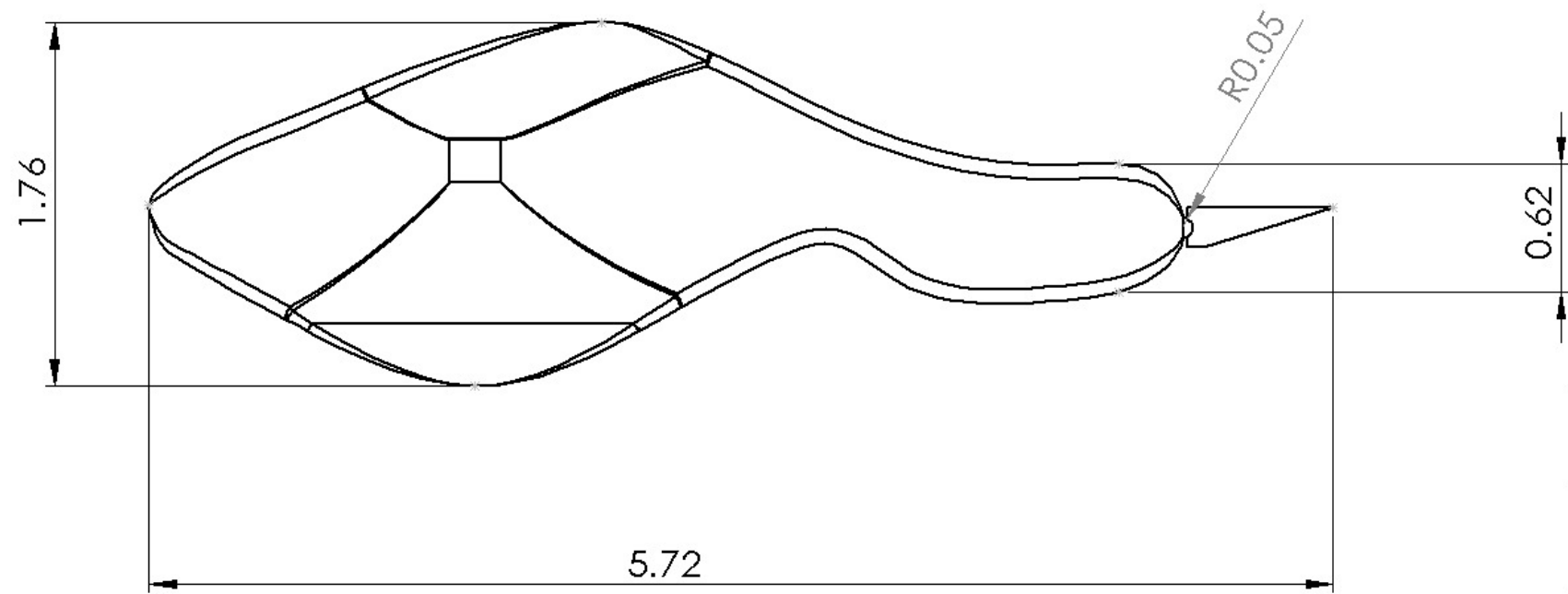
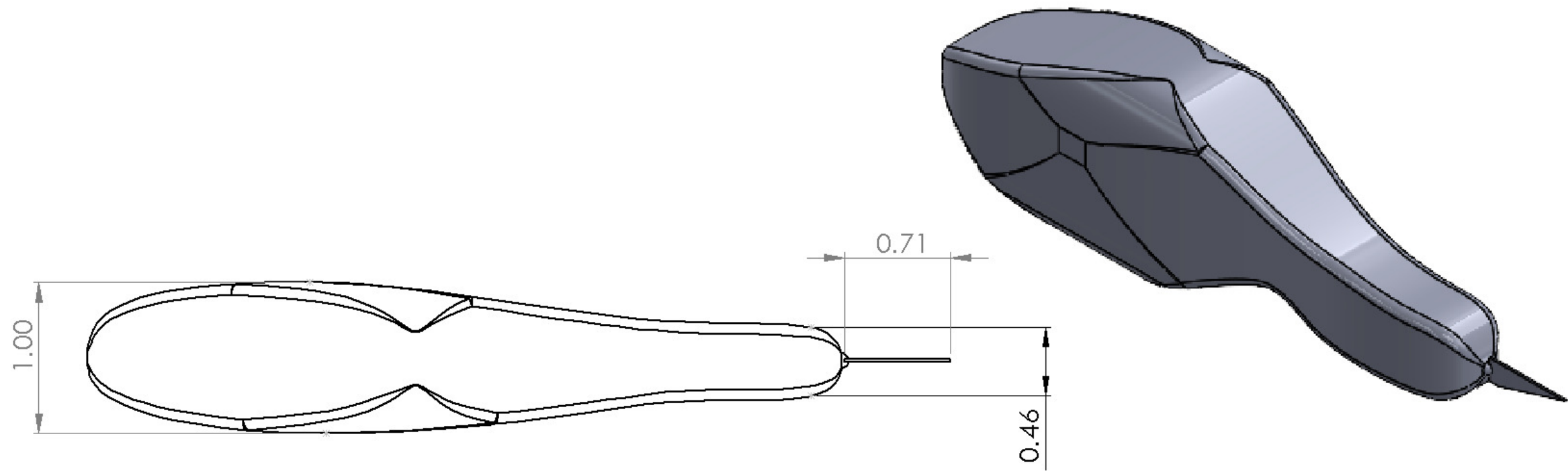
Moving away from the typical exacto knife handles, usually long and skinny, and investigating shorter, thicker, more organic forms.



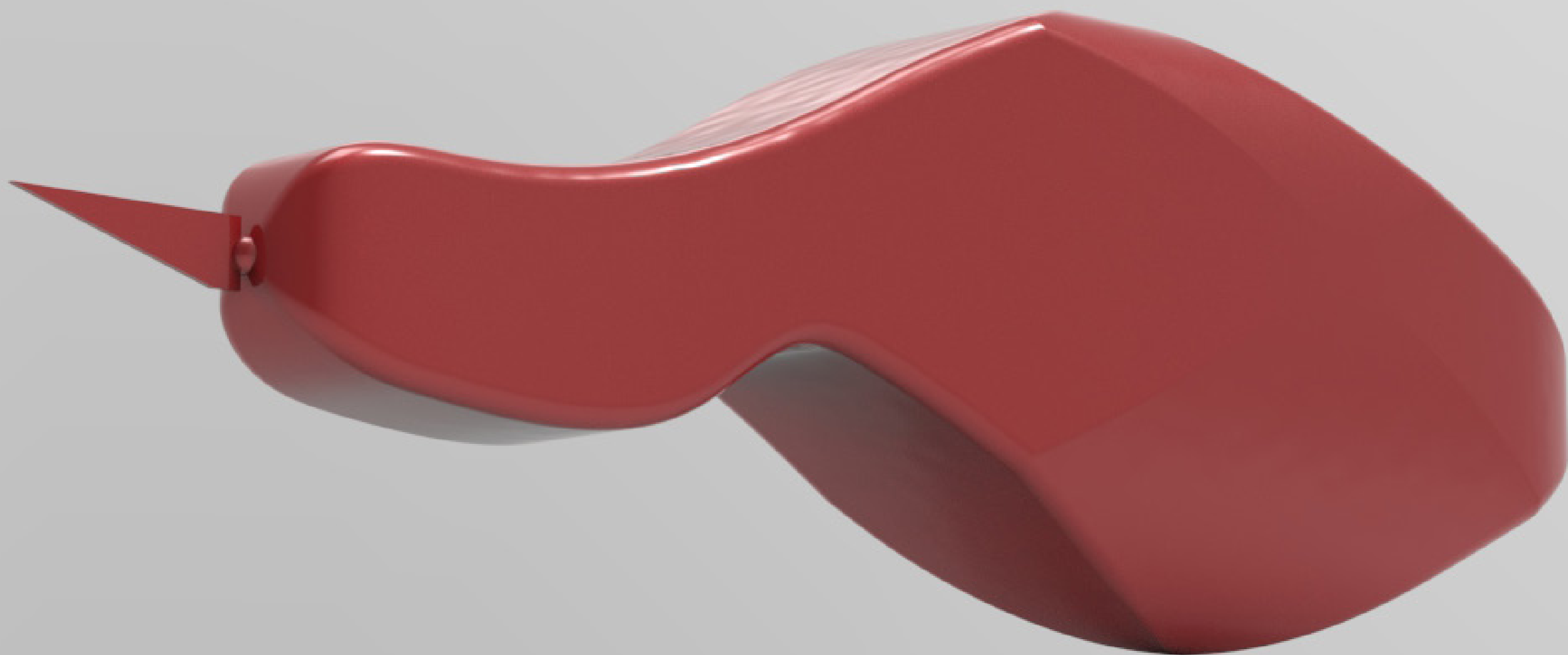




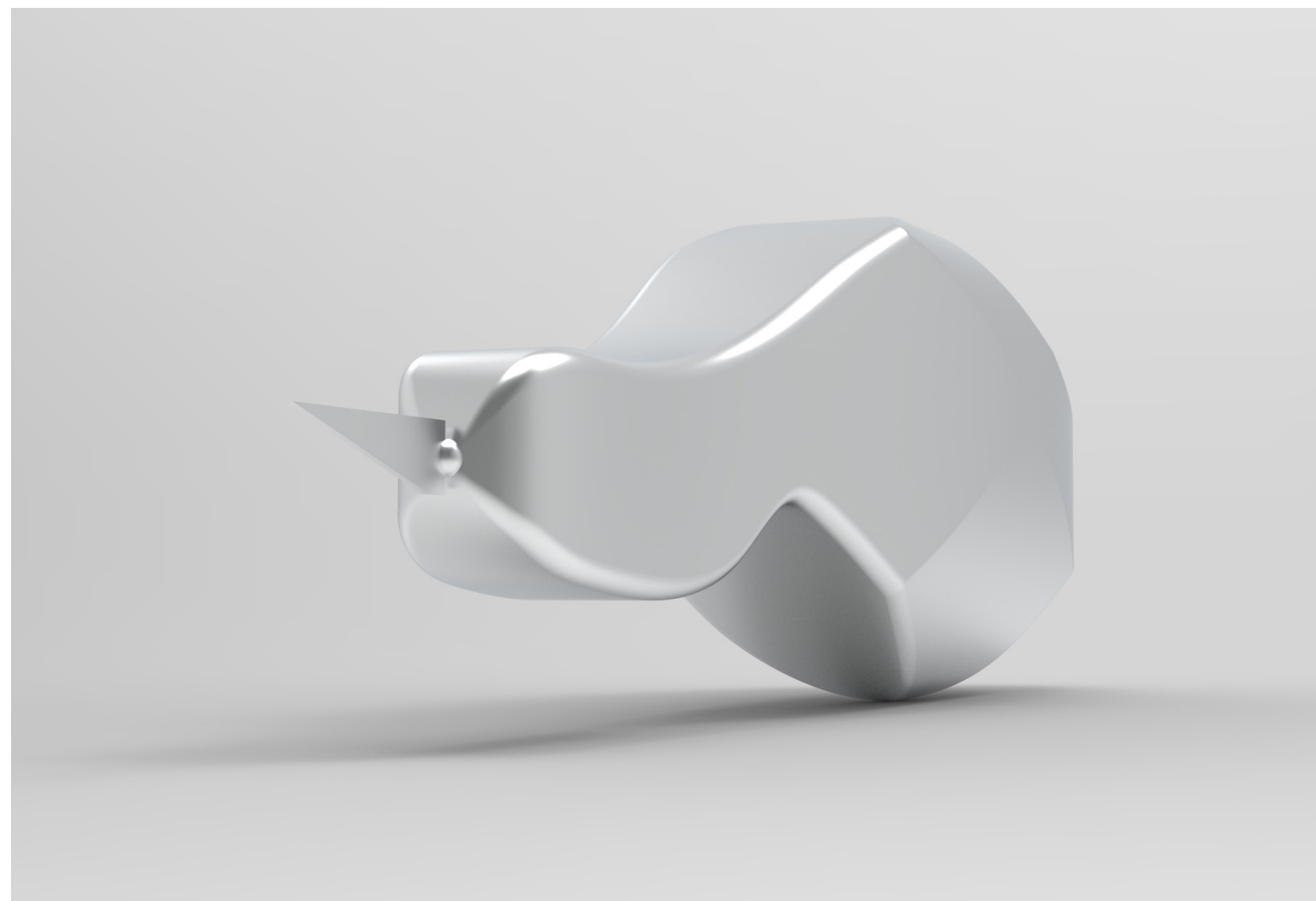
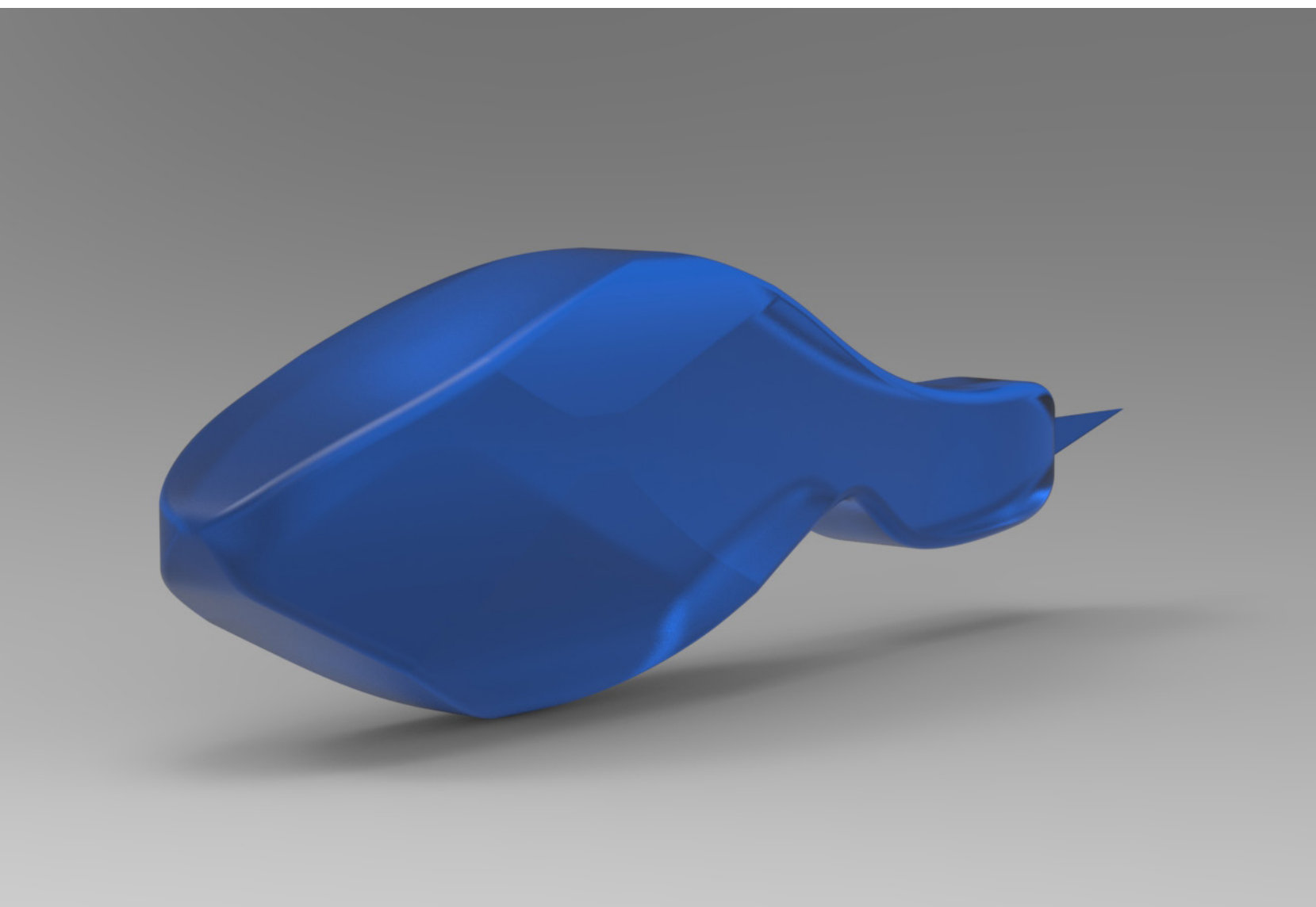
**Final Handel Form**



Audra Castle	12/24
Comfort Cut	
Unit: Inches	
Scale: 1:1	















A handwritten signature in black ink. It begins with a large, stylized capital letter 'A'. To the right of the 'A' is a horizontal line that extends to the right, followed by a small, curved flourish that loops back towards the line. The signature ends with a single dot.